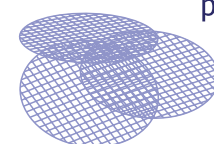


NovaMARS™

Advanced Modeling and Application Development

- Automatic solution of library creation avoids user discrepancies
- Flexible GUI allowing creation of any dissectors for 2D/3D and in-die structures
- Maximizes metrology tool capabilities for fast measurements
- Optimized library size with increased accuracy and repeatability
- Pre-defined and user-defined templates for fast and robust recipe design



Measurement requirements in today's ever-increasing, complex IC manufacturing environments are quickly moving to 3D in-die measurements. As a result of this industry situation, metrology specialists are forced to spend an increasing amount of time developing metrology recipes. NovaMARS™ (Metrology Analysis & Recipe Setup) provides an automatic and easy to use solution for advanced structure modeling and application development for the 45nm technology node and beyond. The high level of automation enables easy and fast application development and eliminates discrepancies between different developers, independent of user proficiency. The strength and flexibility of Process Oriented Modeling Flexibility (POMF) allows process engineers to develop their own scatterometry solutions, keeping the details of their process within the fab.

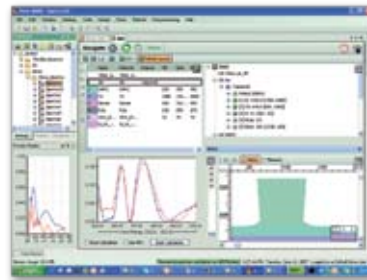
NovaMARS meets the demanding needs for 2D, 3D and in-die measurements, optimizing metrology tool performance and significantly shortening the application development cycle.

NovaHPC™

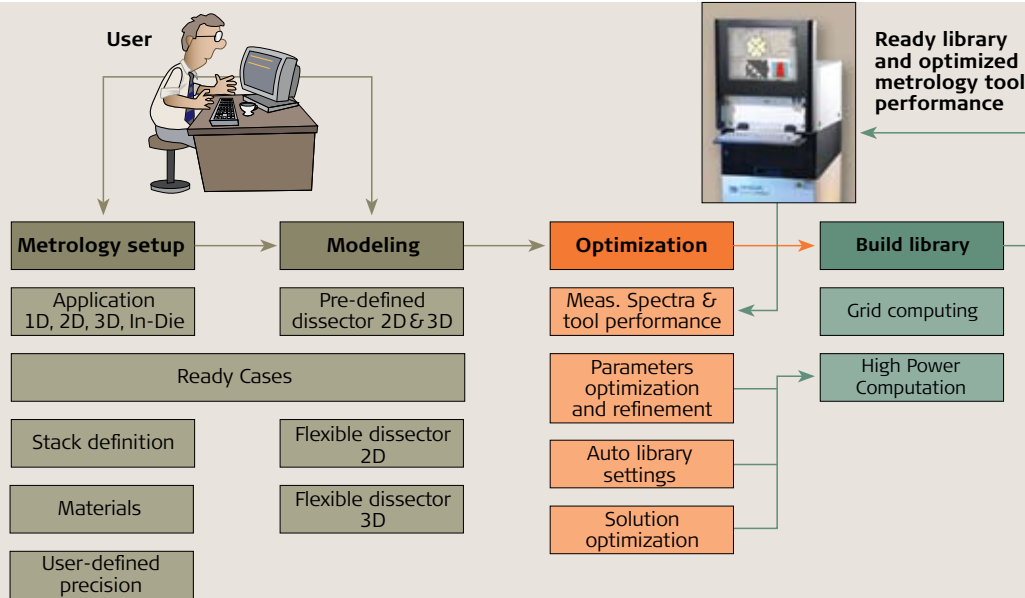
To decrease application development cycle time, Nova offers NovaHPC, a High Power Computing unit. An end-user Grid Computing option forms an alternative low-cost entry level for increasing computing needs. Scalable and user configurable infrastructure with Nova's proprietary task management software addresses the growing needs of IC manufacturing metrology.

NovaHPC Value-Added Benefits

- Accelerates recipe set-up library building
- Scalable infrastructure, invest as you grow
- Low-cost entry level using grid computing with existing computation resources



NovaMARS - intuitive application development



NovaMARS: If You Can't Model It - You Can't Measure It!